



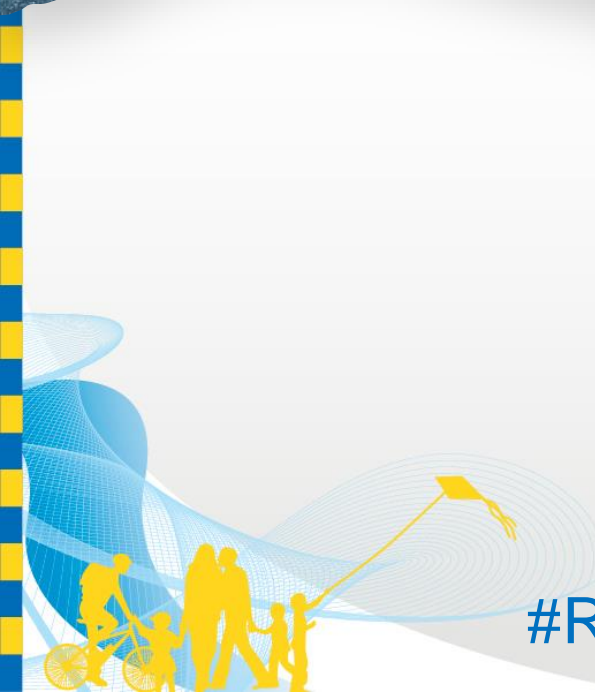
# RegTech

Exploring the *good*

#RegTech

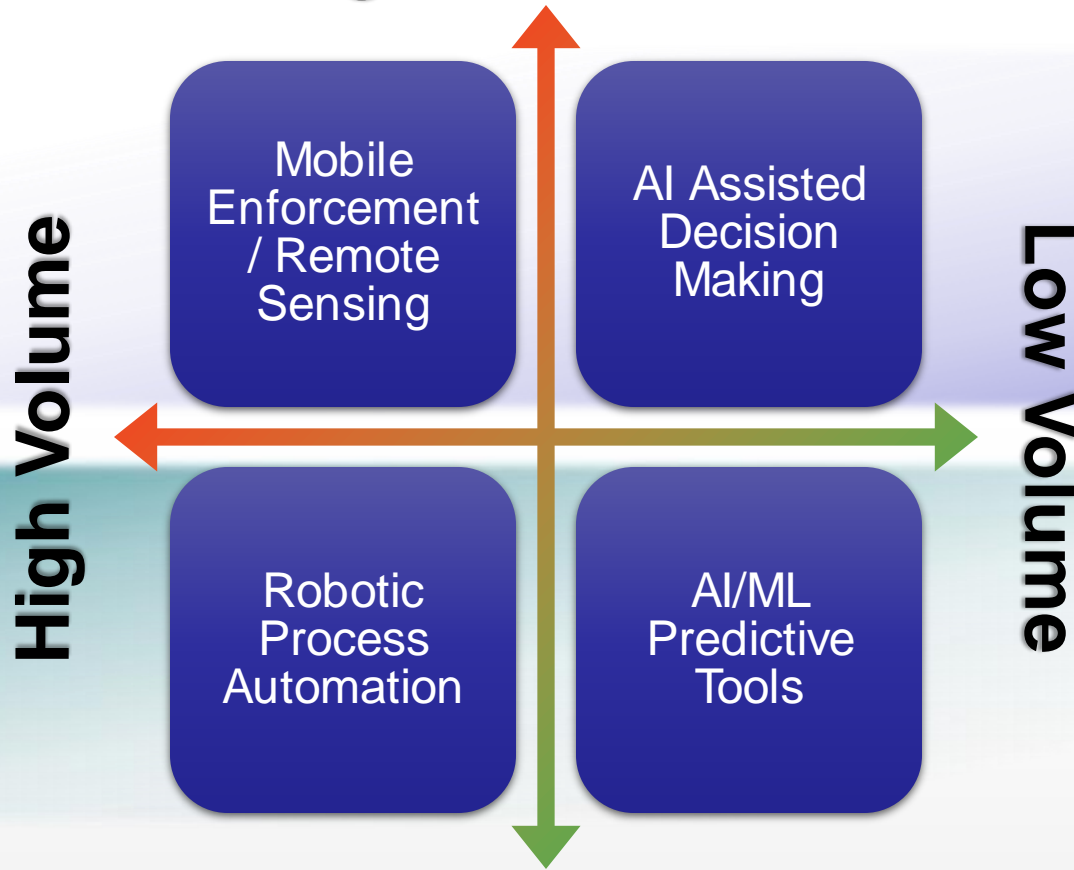


*Dedicated to a better Brisbane*



# RegTech – How do we use it?

**High Value/Risk**



*Shift resources to focus on making a difference*

*Supports us to do the best job we can*

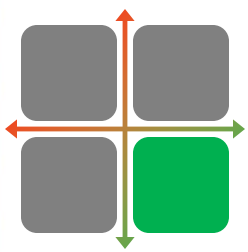
**Low Value/Risk**

#RegTech



*Dedicated to a better Brisbane*





# ML and AI Predictive Tools

- The use of Machine Learning and AI to predict future events/outcomes based on historical data:
  - Dangerous Dog predictions
  - Parking Infringement hotspot
- Supports risk management and prioritisation



#RegTech



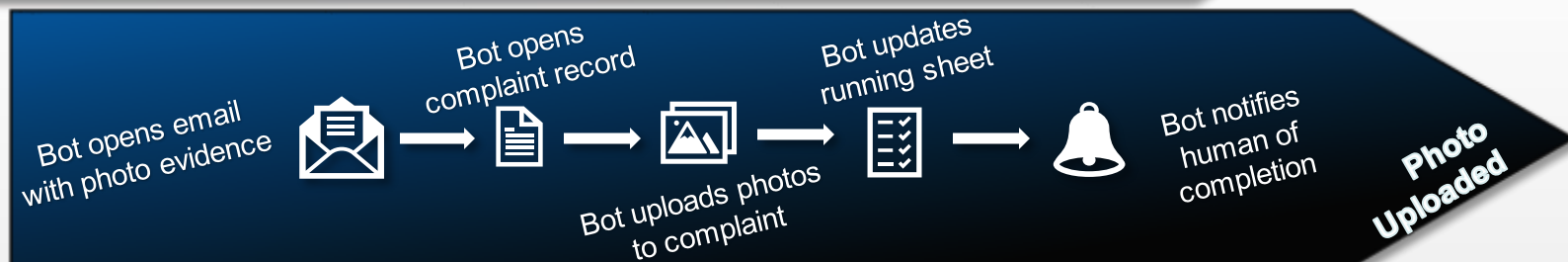
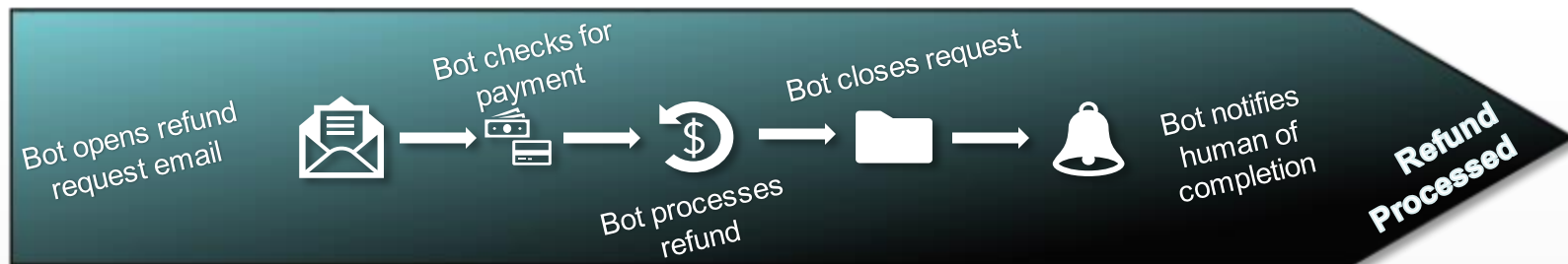
*Dedicated to a better Brisbane*





# Robotic Process Automation and IoT

- Implementing digital “robots” to carry out simple repetitive tasks:
  - Notifying staff that a trap has triggered
  - Processing refund requests and uploading photos to DART



- Perfect for freeing staff to perform more complex and valuable tasks





# AI Assisted Decision Making

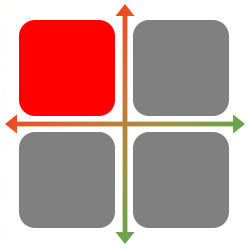
- Applying AI and ML to filter out unnecessary “noise”:



#RegTech



*Dedicated to a better Brisbane*



# Mobile Enforcement / Remote Sensing

- Combining real-world sensing technology and data processing to make our jobs safer and more efficient:
  - Mobile Enforcement Technology
  - Remote Cameras that detect illegal dumping events



- Using tech to detect potential infringements and alert officers



*Dedicated to a better Brisbane*

#RegTech



# What's the future look like?

- Better tools
  - MET vehicles
    - Could this lead to self-driving MET?
  - Expansion of MET to more than just parking
    - What else can we see with existing remote sensing?
  - Expansion of remote sensing across the city
    - What else can we use as a remote sensor?
- Better thinking
  - Continuing to implement data-driven decisions
  - With increased use of AI and ML comes coded ethics and bias – we need to get this right!



*Dedicated to a better Brisbane*

#RegTech

